

MAINTENANCE-FREE BATTERY VRLA AGM

VPRO 4V 5Ah

INDEKS: 6AKUAGM004
EAN: 5904100451470

The construction of **VRLA AGM VPRO batteries (Absorbing Glass Matt)** by VOLT Polski is based on **glass mat separators soaked in electrolyte**.

VRLA (Valve Regulated Lead Acid) means that the batteries use the **technology of self-regulating safety valves and internal gas recombination reaction**. Thanks to the valves the construction of batteries is **non-spillable and protected against the leak of electrolyte outside**. Internal technology recombination of gases eliminates the need of replenishing the electrolyte. The batteries are safe and can operate in closed offices, houses. **They have a long life and low self-discharge design**.

VRLA AGM VPRO batteries can be used in: emergency power system, alarm systems, telecommunication systems, uninterruptible power supplies, marine and medical equipment.

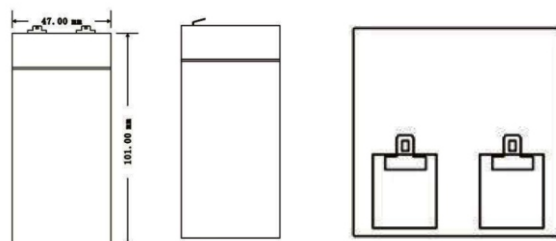
IMPORTANT!

Using maintenance-free **AGM batteries (e.g. AGM, AGM OPTI, AGM VPRO series) to work in photovoltaic installations (cyclic use)** may result in a **faster loss of battery efficiency and capacity**. Such batteries are **designed to float use (e.g. emergency power supply systems)**.

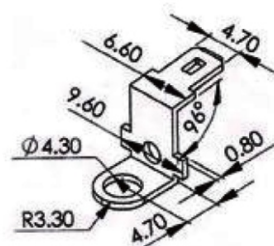
The same as in the case of other types of batteries, **inappropriate charging current may result in damage of the battery and loss of warranty for the battery**.

Main technical data:

Nominal voltage	4V
Nominal capacity	5Ah
Internal Resistance (25°C)	40mΩ
Capacity (40°C)	102%
Capacity (25°C)	100%
Capacity (0°C)	85%
Capacity (-15°C)	65%
Self discharge (25°C) 3months	91%
Self discharge (25°C) 6months	82%
Self discharge (25°C) 12months	64%
Working temperature	25°C±3°C
Working temperature - discharge	(-15 to 50)°C
Working temperature - charge	(-10 to 50)°C
Working temperature - storage	(-20 to 50)°C
Charge voltage (25°C)	4,86V
Max charge current	1,35A
Max discharge current	75A (5 seconds)
Design life (25°C)	8-10 years
Total height	105mm
Height	101mm
Width	47mm
Length	47mm
Weight	0,48kg±3%
Gross dimensions	295x245x132mm
Gross weight	14,9kg



Dimensions



Terminal type (mm):